



Hutton Cricket Club

Polo Field Ground, Hall Green Lane, Hutton, Brentwood, Essex CM13 2QT

Telephone: 01277 219864

Website: <http://huttoncc.com/>

Use of Nets Rules During COVID-19

- Do not attend if you or anyone in your household displays symptoms or your household is currently in isolation
- Personal hygiene measures should be carried out at home before and after use of the facility.
- Bring your own hand sanitiser where possible. If this isn't possible wash your hands with soap and water for at least 20 seconds before and after visiting the club.
- If using the nets as a household please travel together as a household.
- Avoid public transport.
- Try not to arrive too early, aim to arrive at the start of your slot to help with social distancing.
- Bring your own playing/training equipment including balls.
- Bring your own filled drinking bottles.
- Avoid touching as much as possible whilst on club premises and use cleaning stations whenever available.
- Do not overstay your allocated time slot, you should be clear of the area by the time the next users arrive. Do not stay to socialise.
- The use of the bowling machine is not allowed.
- Do not leave private property behind.
- No spitting.
- No saliva or sweat should come into contact with the ball at any time.
- As always, your health and safety is paramount - please ensure that you wear pads a box and a helmet when batting in the nets to minimise the risk of injury. As well as response times being delayed this is vital to avoid any additional stress on the NHS.
- We ask that all users to report any infection of their household following use of the facility to allow effective contact tracing and to limit the spread of the virus.



COVID-19 NET BOOKING SYSTEM AND USE OF OUTDOOR FACILITIES



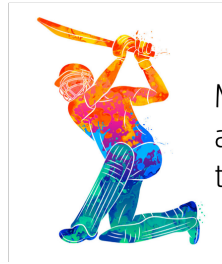
ONLY paid members will be able to access the nets



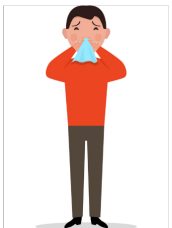
Nets are bookable in advance at: https://huttoncc.com/pages/page_36190/Net-Session-Booking-.aspx



DO NOT turn up to the nets without a prior booking



Maximum of two people using a net unless everyone is from the same household



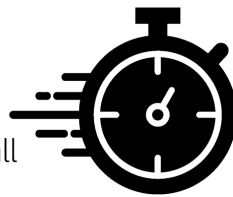
DO NOT attend if you or a member of your household has symptoms of COVID-19



One session per family per day



DO NOT share equipment



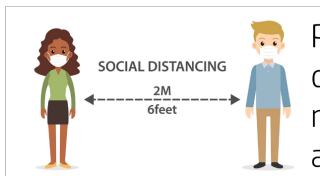
Once your session is finished please leave the nets immediately to help maintain social distancing and government guidelines



You must have your own ball DO NOT use saliva to shine the ball



Please keep other members in mind when booking to ensure all are able to use the facilities and enjoy



Please practice social distancing - members must be 2 metres apart at all times



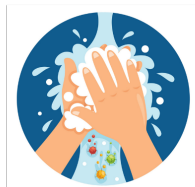
No toilets available on site



Please bring your own First Aid Kit as there is no access to the clubhouse



Nets are open 5pm-8pm Mon-Fri.



Wash your hand thoroughly BEFORE and AFTER sessions

*The committee reserves the right to withdraw the privilege of using the nets from members who do not follow these rules.
Please stay safe while having fun!*